

Smithers Regional Airport Development Opportunity



Smithers is the economic, recreation and cultural hub of the Bulkley Valley, and serves a regional population of approximately 15,000 people. Thanks to its strategic location, vibrant community and skilled labour pool, Smithers is an attractive destination for entrepreneurs and businesses seeking growth and opportunity. Smithers is well serviced by a sophisticated transportation network, including air, rail and road - providing direct connections to major urban centres and additional markets.

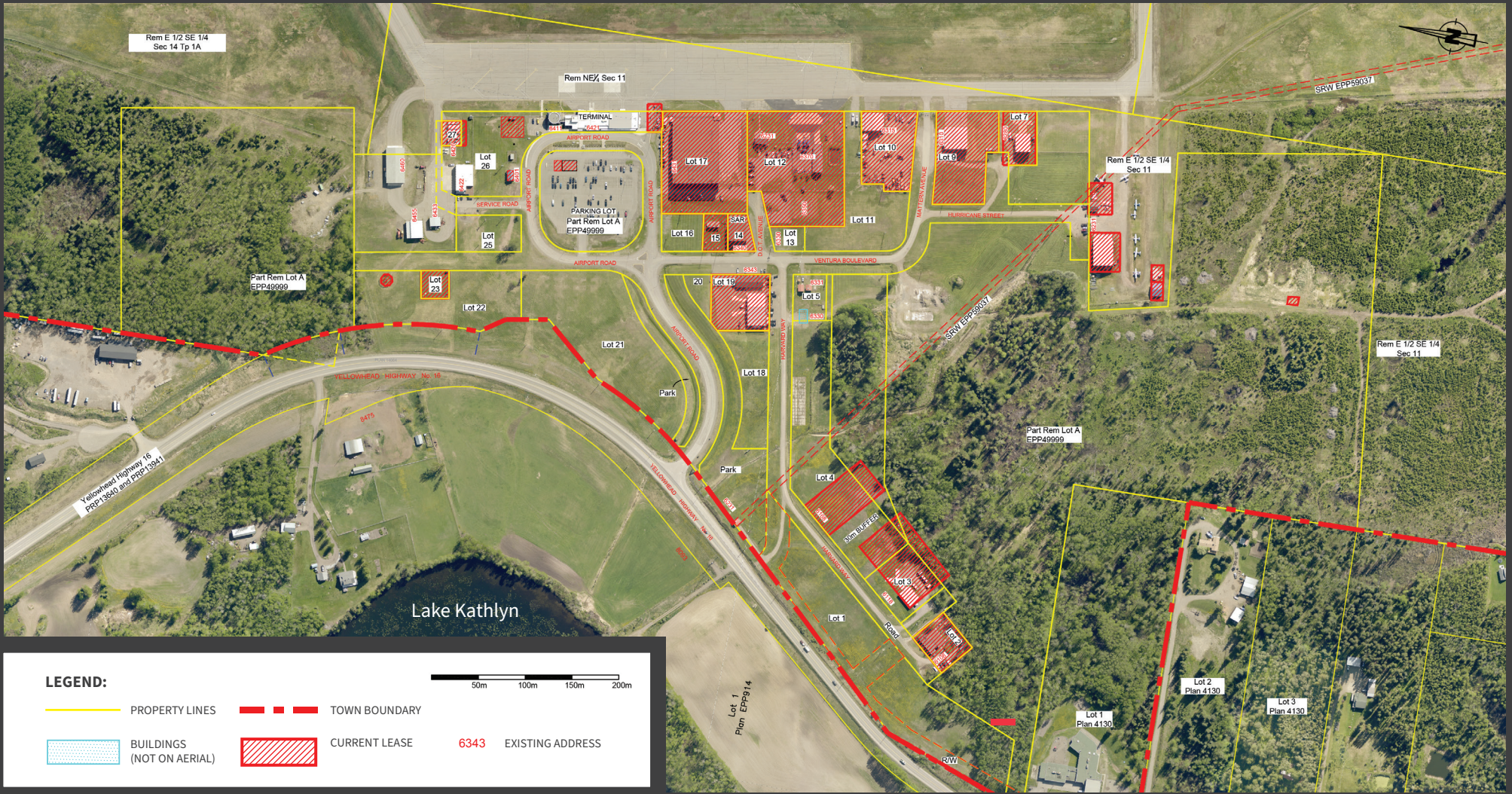
- The Smithers Regional Airport is located a short drive (5km) from the Town of Smithers.
- 340 hectares of Airport land.
- Serviced by daily scheduled flights, as well as fixed-wing and rotary charter operators, medevacs, BC Wildfire service, and more.
- On-site café and bar, vehicle rentals and secure parking.
- Smithers is located on the CN Rail line, linking the bustling Port of Prince Rupert to global markets.
- Highway 16 (Yellowhead Highway) passes through Smithers, providing excellent truck transportation infrastructure for the movement of supplies. Highway 16 is well maintained and “all-weather”, permitting efficient travel and easy access by vehicle.



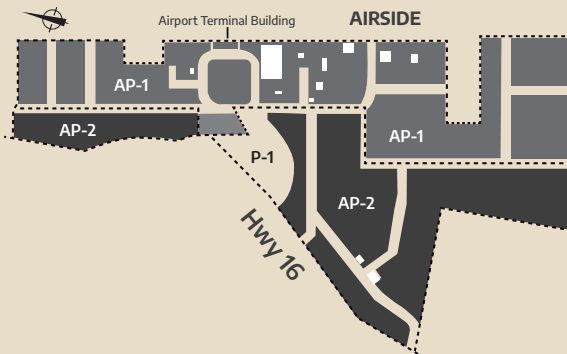
For more information please contact:
Smithers Regional Airport Manager

250-847-3664
tmuscat@smithers.ca

Smithers Regional Airport - Land Available for Lease



53.5 hectares of land has been recently rezoned to accommodate future airport and airport industrial development. The two new zones, Airport (AP-1) and Airport Industrial (AP-2), allow for a range of airport-related uses. Available land includes a mix of serviced (water & sewer) and unserviced lots.



- Easy access to Yellowhead Highway 16 & 5 km from the Town of Smithers
- 340 hectares of Airport land
- 23.2 hectares of groundside land available for groundside development
- 19.5 hectares of airport lands available for airport industrial development

For more information please contact:
Smithers Regional Airport Manager
 250-847-3664
tmsucat@smithers.ca

